



Réamheolaire Fochéime
Undergraduate Prospectus **2025**

Dátaí Tábhachtacha 2024/25

Important Dates 2024/25

2024 Open Days & Events

CAO School's Open Day - Tallaght Campus	Thursday, 14 November 2024	10:00 - 14:00
CAO School's Open Day - Blanchardstown Campus	Thursday, 21 November 2024	10:00 - 14:00
CAO Open Day, University Wide - Grangegorman Campus	Saturday, 7 December 2024	10:00 - 14:00

2025 Open Days & Events

CAO Webinar	Wednesday, 15 January 2025	18:00 - 19:30
QQI Webinar	Wednesday, 22 January 2025	18:00 - 19:00
Mature Student Webinar	Thursday, 23 January 2025	18:00 - 19:00
CAO Open Day - Aungier Street Campus	Saturday, 29 March 2025	10:00 - 12:30
CAO Open Day - Tallaght Campus	Tuesday, 1 April 2025	17:30 - 19:30
CAO Open Day - Blanchardstown Campus	Thursday, 3 April 2025	17:30 - 19:30
CAO Open Day - Grangegorman & Bolton Street Campus	Saturday, 5 April 2025	10:00 - 13:00
CAO Online Q&A	Wednesday, 30 April 2025	18:00 - 19:00
CAO Change of Mind Webinar	Wednesday, 25 June 2025	13:00 - 14:30

We will host a series of subject specific webinars from January 2025. Details will be advertised on tudublin.ie/opendays soon.

Clár Ábhair

Contents

Welcome	1	Navigating the CAO	26
Undergraduate Courses	2	Progression	28
TU Dublin at a Glance	9	QQI Applicants	29
Our Campus Locations	10	Mature Students	30
Getting to our Campuses	13	Advanced Entry	31
Accommodation	14	Alternative Entry Routes	32
Students' Union	15	Parents & Guardians	33
What our Students say...	16	Learn + Work	34
Notable Alumni	18	Scholarships & Fees	35
Student Life	20	School Liaison	36
Discover Sport	22	Sustainability & TrailbrazHer	37
Careers, Work Placement & Erasmus	24		
Student Services & Wellbeing	25		

Fáilte Welcome

A degree from Technological University Dublin (TU Dublin) is globally recognised and offers much more than an academic qualification. Enrolling in one of our undergraduate courses ensures an exceptional university experience that fosters educational growth, personal development, and professional readiness.



TU Dublin is a vibrant community with a diverse student population, representing almost 27,000 students from over 100 countries, ensuring our campuses in Aungier Street, Blanchardstown, Bolton Street, Tallaght, and Grangegorman are rich, dynamic environments for learning and growth. Our programmes, delivered through our five Faculties: Arts and Humanities, Business, Computing, Digital and Data, Engineering and Built Environment, and Sciences and Health, provide numerous opportunities within the curriculum and through extracurricular activities, preparing you for the world of work.

At TU Dublin, we believe in learning by doing. Our practice-based learning approach is designed to develop the knowledge, skills and experience you need to excel in a competitive job market. We assess our students based on their depth of knowledge and how they apply what they've learned to tackle problems creatively through project-based learning. Our innovative education model also embeds sustainability as a learning outcome, nurturing responsible, sustainably minded global citizens.

TU Dublin is investing over €500 million in new, state-of-the-art, technology-enabled facilities to enhance our students' experience. On our Tallaght campus, we are developing a new multi-disciplinary building for teaching and research in hospitality, culinary arts, engineering and apprenticeship activities. It will deliver leading-edge lecture theatres, a training restaurant, design studios, and research facilities.

Next year in Blanchardstown, we plan to open a new building, Áras Geal, consisting of classrooms, IT laboratories, informal learning resource space, administration space and ancillary spaces. Our Academic Hub & Library will be ready for the 2024/2025 academic hub in Grangegorman, accommodating essential student amenities such as our Library Services, Maths Learning Centre, Academic Writing Centre, and Disability Support Services.

We have many Open Day events planned for the coming academic year, and we look forward to welcoming you to campus very soon. In the meantime, visit our digital prospectus at tudublin.ie/cao, where you can discover a world of #InfinitePossibilities.

Professor John Doran
Interim President, TU Dublin

Cúrsaí Fochéime Undergraduate Courses

Code	Course	Level	Years	Places	Min number of		Min grade in		Other Requirements	Points 2024 Round 1	Points 2023 Round 1	Location
					Subjects	H5's	Maths	English/Irish				
Architecture & Built Environment												
TU731	Ceantálaíocht, Luacháil 7 Gníomhaireacht Eastáit Auctioneering, Valuation & Estate Agency	7	3	25	5		O6/H7	O6/H7		350	370	Bolton Street
TU831	Teicneolaíocht Ailtireachta Architectural Technology	8	4	55	6	2H5's	O6/H7	O6/H7	C	410	410	Bolton Street
TU832	Ailtireacht Architecture	8	5	70	6	2H5's	O6/H7	O6/H7	*	652†	645†	Bolton Street
TU833	Bainistíocht Foirgníochta Construction Management	8	4	45	6	2H5's	O6/H7	O6/H7		400	410	Bolton Street
TU835	Pleanáil 7 Bainistíocht Comhshaoil Planning & Environmental Management	8	4	40	6	2H5's	O6/H7	O6/H7		316	347	Bolton Street
TU836	Eacnamaíocht Réadmhaoine Property Economics (Valuation Surveying)	8	4	25	6	2H5's	O6/H7	O6/H7		411	430	Bolton Street
TU837	Suirbhéireacht Chainníochta 7 Eacnamaíocht Foirgníochta Quantity Surveying & Construction Economics	8	4	45	6	2H5's	O6/H7	O6/H7		414	440	Bolton Street
Business												
TU670	Gnó Business	6	2	30 (B) 30 (T)	5		F2/O6/H7	Irish F3/O6/H7 English O6/H7	2	AQA	AQA	Blanchardstown or Tallaght
TU678	Gnó (Iontráil Ghinearálta): Airgeadas 7 Gnó, Bainistíocht Gnó, Margaíocht, Bainistíocht Miondiola Business (General Entry): Business & Finance, Business Management, Marketing, Retail Management	6	2	280	5		O6/H7	O6/H7		251	New in 2024	Aungier Street
TU788	Cuntasaíocht 7 Airgeadas Accounting & Finance	7	3	20 (B) 35 (T)	5		F2/O6/H7	O6/H7	4	201	202	Blanchardstown or Tallaght
TU772	Gnó (Iontráil Ghinearálta): Gnó, Gnó & TF, Gnó Idirnáisiúnta Business (General Entry): Business, Business & IT, International Business	7	3	45	5		F2/O6/H7	O6/H7	3	AQA	AQA	Blanchardstown
TU787	Gnó (Iontráil Ghinearálta): Gnó Idirnáisiúnta, Bainistíocht, Margaíocht Business (General Entry): International Business, Management, Marketing	7	3	180	5		F2/O6/H7	O6/H7	10	AQA	AQA	Tallaght
TU781	Margaíocht Dhigiteach Digital Marketing	7	3	30	5		F2/O6/H7	O6/H7		200	226	Blanchardstown
TU782	Margaíocht Dhigiteach Digital Marketing	7	3	40	5		F2/O6/H7	O6/H7		AQA	AQA	Tallaght
TU910	Cuntasaíocht Accounting	8	3/4	70	6	3H5's	O4/H7	O4/H7		380	380	Aungier Street
TU933	Cuntasaíocht 7 Airgeadas Accounting & Finance	8	4	40 (B) 60 (T)	6	2H5's	F2/O6/H7	O6/H7	4	260	261	Blanchardstown or Tallaght
TU919	Fógraíocht 7 Cumarsáid Mhargaíochta Advertising & Marketing Communications	8	4	50	6	2H5's	F2/O6/H7	O6/H7		218	210	Tallaght
TU904	Gnó 7 Dlí Business & Law	8	4	35	6	3H5's	O4/H7	O4/H7		445	451	Aungier Street
TU903	Gnó 7 Bainistíocht Business & Management	8	4	135	6	3H5's	O4/H7	O4/H7		451	451	Aungier Street
TU902	Gnó (Iontráil Ghinearálta): Gnó, Gnó & TF, Gnó Idirnáisiúnta Business (General Entry): Business, Business & IT, International Business	8	4	105	6	2H5's	F2/O6/H7	O6/H7	3	214	260	Blanchardstown
TU932	Gnó (Iontráil Ghinearálta): Gnó Idirnáisiúnta, Bainistíocht, Margaíocht Business (General Entry): International Business, Management, Marketing	8	4	120	6	2H5's	F2/O6/H7	O6/H7	10	200	211	Tallaght
TU912	Anailísíocht Ghnó Business Analytics	8	4	20	6	2H5's	O4/H7	O6/H7		338	326	Aungier Street

Code	Course	Level	Years	Places	Min number of		Min grade in		Other Requirements	Points 2024 Round 1	Points 2023 Round 1	Location
					Subjects	H5's	Maths	English/Irish				
TU914	Ríomhaireacht Ghnó Business Computing	8	4	45	6	2H5's	O4/H7	O6/H7		320	342	Aungier Street
TU920	Margaíocht Dhigiteach Digital Marketing	8	4	40	6	2H5's	F2/O6/H7	O6/H7		272	280	Blanchardstown
TU921	Teicneolaíochtaí Margaíochta Digití Digital Marketing Technologies	8	4	60	6	2H5's	F2/O6/H7	O6/H7		226	226	Tallaght
TU924	R-Thráchtáil sa Mhiondíoltóireacht E-Commerce in Retailing	8	4	50	6	2H5's	O4/H7	O4/H7		252	242	Aungier Street
TU905	Eacnamaíocht 7 Airgeadas Economics & Finance	8	3/4	35	6	2H5's	O4/H7	O4/H7		423	423	Aungier Street
TU954	Bainistíocht Imeachtaí Event Management	8	4	64	6	2H5's	O4/H7	O6/H7		293	292	Grangegorman
TU906	Bainistíocht Acmhainní Daonna Human Resource Management	8	4	50	6	2H5's	O6/H7	O6/H7		326	326	Aungier Street
TU965	Gnó Idirnáisiúnta 7 Teangacha (Sínis/Fraicis/ Gearmáinis/Gaeilge/Iodáilis/Spáinnis) International Business & Languages (Chinese/ French/German/Irish/Italian/Spanish)	8	4	100	6	2H5's	O6/H7	O6/H7	A	291	298	Aungier Street/ Grangegorman
TU907	Loighistic 7 Bainistíocht An tSlabhra Solá Logistics & Supply Chain Management	8	4	45	6	2H5's	O6/H7	O6/H7		307	310	Aungier Street
TU922	Margaíocht Marketing	8	4	85	6	3H5's	O4/H7	O4/H7		388	384	Aungier Street
Computing, Data & Mathematics												
TU652	Ríomhaireacht Computing	6	2	12	5		F2/O6/H7	English O6/H7 or Irish F3/O6/H7		AQA	232	Tallaght
TU655	Ríomhaireacht - Teicneolaíochtaí Líonraithe (Foghlaim 7 Oibrigh) Computing - Networking Technologies (Learn & Work)	6	2	20	5		O6/H7	O6/H7	n	Apply Direct	Apply Direct	Blanchardstown
TU756	Ríomhaireacht (Iontráil Ghinearálta) Computing (General Entry)	7	3	32	5		F2/O6/H7	O6/H7	8	210	234	Tallaght
TU757	Ríomhaireacht - Teicneolaíocht Faisnéise Computing (Information Technology)	7	3	20	5		O6/H7	O6/H7		272	267	Blanchardstown
TU758	Ríomhaireacht - Fóiréinsic Dhigiteach 7 Cibearshlándáil Digital Forensics & Cyber Security	7	3	20	5		O6/H7	O6/H7		280	318	Blanchardstown
TU865	Ríomhaireacht (Néaríomhaireacht) Cloud Computing	8	4	21	6	2H5's	F2/O6/H7	O6/H7		242	253	Tallaght
TU856	Ríomheolaíocht Computer Science	8	4	85	6	2H5's	O5/H6	O6/H6		454	485	Grangegorman
TU857	Ríomheolaíocht (Infreastruchtúr) Computer Science (Infrastructure)	8	4	54	6	2H5's	O4/H7	O6/H7		410	441	Grangegorman
TU858	Ríomheolaíocht (Idirnáisiúnta) Computer Science (International)	8	4	50	6	2H5's	O4/H7	O6/H7		413	420	Grangegorman
TU859	Ríomhaireacht (Iontráil Ghinearálta) Computing (General Entry)	8	4	85	6	2H5's	F2/O6/H7	O6/H7	8	226	238	Tallaght
TU860	Ríomhaireacht - Teicneolaíocht Faisnéise Computing (Information Technology)	8	4	60	6	2H5's	O6/H7	O6/H7		280	302	Blanchardstown
TU862	Ríomhaireacht le Meaisínfhoghlaim agus Intleacht Shaorga Computing with Machine Learning and Artificial Intelligence	8	4	30	6	2H5's	F2/O6/H7	O6/H7		244	243	Tallaght
TU850	Eolaíocht Sonraí agus Intleacht Shaorga Data Science and Artificial Intelligence	8	4	40	6	2H5's	O3/H7	O6/H7		403	New in 2024	Grangegorman
TU863	Ríomhaireacht - Fóiréinsic Dhigiteach 7 Cibearshlándáil Digital Forensics & Cyber Security	8	4	60	6	2H5's	O6/H7	O6/H7		300	320	Blanchardstown
TU874	Eolaíochtaí Matamaiticiúla Mathematical Sciences	8	4	35	6	2H5's	O2/H6 X	O6/H7		302	292	Grangegorman

Cúrsaí Fochéime Undergraduate Courses

Code	Course	Level	Years	Places	Min number of		Min grade in		Other Requirements	Points 2024 Round 1	Points 2023 Round 1	Location
					Subjects	H5's	Maths	English/Irish				
Creative Arts, Design & Media												
TU796	Meáin Dhigiteacha Chruthaitheacha Creative Digital Media	7	3	25	5		O6/H7/F2	O6/H7		304	312	Blanchardstown
TU795	Marsantú 7 Taispeántas Fisiúil Visual Merchandising & Display (Restricted)	7	3	20	5				Ω	418†	459†	Grangegorman
TU978	Tionscail Chruthaitheacha 7 Cultúr Fisiúil Creative Industries & Visual Culture	8	3	35	6	2H5's		H4 English only		265	248	Grangegorman
TU981	Meáin Dhigiteacha Chruthaitheacha Creative Digital Media	8	4	55	6	2H5's	F2/O6/H7	O6/H7		327	326	Blanchardstown
TU973	Dearadh - Cumarsáid Amhairc Design - Visual Communication (Restricted)	8	4	35	6	2H5's			Ω	847†	695†	Grangegorman
TU983	Scannánaíocht 7 Craoltóireacht Film & Broadcasting	8	4	36	6	2H5's		H4		430	464	Grangegorman
TU974	Mínealaín Fine Art (Restricted)	8	4	32	6	2H5's			Ω	712†	665†	Grangegorman
TU984	Dearadh Cluichí Game Design	8	4	40	6	2H5's	O4/H7	O4/H7		454	420	Grangegorman
TU975	Dearadh Intí Interior Design (Restricted)	8	4	35	6	2H5's			Ω	709†	638†	Grangegorman
TU985	Iriseoireacht Journalism	8	4	40	6	2H5's		H4		301	330	Grangegorman
TU982	Léiriú Meán 7 Ealaíona Digiteacha Media Production & Digital Arts	8	4	36	6	2H5's	F3/O6/H7	O6/H7		283	300	Tallaght
TU976	Grianghrafadóireacht Photography	8	4	24	6	2H5's				304	848†	Grangegorman
Culinary, Hospitality & Tourism												
TU741	Bainistíocht Ealaíon Báicéireachta 7 Taosráin Baking & Pastry Arts Management	7	3	48	5		O6/H7	O6/H7		AQA	AQA	Grangegorman
TU742	Ealaíona Cócaireachta Culinary Arts	7	3	16	5		F2/O6/H7	O6/H7		AQA	AQA	Tallaght
TU745	Bainistíocht Fáilteachais Hospitality Management	7	3	20	5		O6/H7	O6/H7		206	208	Grangegorman
TU746	Bainistíocht Fáilteachais Idirnáisiúnta 7 Turasóireachta International Hospitality & Tourism Management	7	3	25	5		F2/O6/H7	O6/H7		AQA	AQA	Tallaght
TU747	Bainistiú Turasóireachta Tourism Management	7	3	30	5		O6/H7	O6/H7		AQA	AQA	Grangegorman
TU942	Ealaíona Cócaireachta Culinary Arts	8	4	64	6	2H5's	O6/H7	O6/H7		224	AQA	Grangegorman
TU951	Bainistíocht Fáilteachais Idirnáisiúnta 7 Turasóireachta International Hospitality & Tourism Management	8	4	20	6	2H5's	F2/O6/H7	O6/H7		238	226	Tallaght
TU952	Bainistíocht Fáilteachais Idirnáisiúnta International Hospitality Management	8	4	25	6	2H5's	O4/H7	O6/H7		269	220	Grangegorman
TU953	Margaíocht Turasóireachta Tourism & Digital Marketing	8	4	32	6	2H5's	O4/H7	O6/H7		227	260	Grangegorman
Engineering												
TU701	Innealtóireacht Uathobrithe agus Róbataic Automation Engineering and Robotics	7	3	32	5		O6/H7	O6/H7		253	263	Bolton Street
TU720	Bainistíocht 7 Teicneolaíocht Gluaistean Automotive Management & Technology	7	3	40	5		O6/H7	O6/H7		AQA	AQA	Bolton Street
TU721	Teicneolaíocht Eitíochta Aviation Technology	7	3	45	5		O6/H7	O6/H7		320	300	Bolton Street
TU703	Innealtóireacht Foirgníochta Building Engineering	7	3	32	5		O6/H7	O6/H7		242	240	Bolton Street

Code	Course	Level	Years	Places	Min number of		Min grade in		Other Requirements	Points 2024 Round 1	Points 2023 Round 1	Location
					Subjects	H5's	Maths	English/Irish				
TU704	Innealtóireacht Shíbhialta Civil Engineering	7	3	50	5		O6/H7	O6/H7		253	252	Bolton Street
TU713	Innealtóireacht Ríomhaireachta Computer Engineering	7	3	20	5		O6/H7	O6/H7		241	255	Blanchardstown
TU705	Innealtóireacht Leictreach 7 Rialúcháin Electrical & Control Engineering	7	3	20	5		O4/H7	O6/H7		AQA	213	Grangegorman
TU706	Innealtóireacht Seirbhíse Leictreachais Electrical Services Engineering	7	3	16	5		O6/H7	O6/H7		AQA	AQA	Grangegorman
TU726	Innealtóireacht Leictreonach Electronic Engineering & Engineering Software (General Entry)	7	3	20	5		O4/H7	O6/H7	9	208	217	Tallaght
TU714	Innealtóireacht Leictreonaice 7 Cumarsáide Electronics & Communications Engineering	7	3	32	5		O4/H7	O6/H7		223	214	Grangegorman
TU709	Innealtóireacht (Iontráil Ghinearálta) Engineering (General Entry)	7	1	48	5		O4/H7	O6/H7	13	405	405	Bolton Street/ Grangegorman
TU708	Innealtóireacht (Iontráil Ghinearálta) Engineering (General Entry)	7	3	20	5		O6/H7	O6/H7	6	AQA	AQA	Blanchardstown
TU717	Innealtóireacht Mheicniúil Mechanical Engineering	7	3	64	5		O6/H7	O6/H7		260	289	Bolton Street
TU725	Innealtóireacht Mheicniúil (Iontráil Ghinearálta) Mechanical Engineering (General Entry)	7	3	36	5		O4/H7	O6/H7	11	AQA	AQA	Tallaght
TU716	Teicneolaíochtaí Líonraithe Networking Technologies	7	3	60	5		O4/H7	O6/H7		240	226	Grangegorman
TU722	Ionstraimíocht 7 Uathoibriú Próiseas (Foghlaim 7 Oibrigh) Process Instrumentation & Automation (Learn & Work)	7	3	20	5		O6/H7	O6/H7	*	385\$	352\$	Blanchardstown
TU807	Innealtóireacht Ríomhaireachta - Córais Mhóibileacha Computer Engineering in Mobile Systems	8	4	20	6	2H5's	O6/H7	O6/H7		260	301	Blanchardstown
TU802	Seirbhíse Leictreachais 7 Bainistíocht Fuinnimh Electrical Services & Energy Management	8	4	20	6	2H5's	O4/H7	O6/H7		253	302	Grangegorman
TU829	Bogearraí Innealtóireachta & Innealtóireachta Leictreonacha (Iontráil Ghinearálta) Electronic Engineering & Engineering Software (General Entry)	8	4	35	6	2H5's	O4/H7	O6/H7	9	244	235	Tallaght
TU805	Innealtóireacht (Iontráil Ghinearálta) Engineering (General Entry)	8	4	160	6	2H5's	H4	O6/H7	7 D	443	454	Bolton Street/ Grangegorman
TU804	Innealtóireacht (Iontráil Ghinearálta) Engineering (General Entry)	8	4	32	6	2H5's	O6/H7	O6/H7	6	301	300	Blanchardstown
TU828	Innealtóireacht Mheicniúil (Iontráil Ghinearálta) Mechanical Engineering (General Entry)	8	4	36	6	2H5's	O4/H7	O6/H7	12	327	321	Tallaght
TU810	Innealtóireacht Mheicitreonach Mechatronic Engineering	8	4	32	6	2H5's	O6/H7	O6/H7		261	261	Blanchardstown
TU811	Dearadh Táirgí Product Design	8	4	36	6	2H5's	O6/H7			423	421	Aungier Street/ Bolton Street/ Grangegorman
TU801	Innealtóireacht Fuinnimh Inbhuanaithe 7 Comhshaoil Sustainable Energy Engineering	8	4	36	6	2H5's	O5/H7	O6/H7		236	235	Tallaght
Law												
TU918	Dlí Law (LLB)	8	3	50	6	2H5's		H4		420	420	Grangegorman
TU917	Dlí le Teanga Law (LLB) with a Language	8	4	25	6	2H5's		H4	B	347	339	Grangegorman

Cúrsaí Fochéime Undergraduate Courses

Code	Course	Level	Years	Places	Min number of		Min grade in		Other	Points	Points	Location
					Subjects	H5's	Maths	English/Irish	Requirements	2024 Round 1	2023 Round 1	
Music & Drama												
TU961	Nuacheol Tráchtála Commercial Modern Music (BIMM)	8	4	200	6	2H5's			↑	504↑	602↑	Francis Street
TU962	Drámaíocht (Léiriú) Drama (Performance) (Restricted)	8	3	20	6	2H5's		O6/H7	↑	411↑	369↑	Grangegorman
TU963	Ceol Music (Restricted)	8	4	35	6	2H5's	O6/H7	O6/H7	↑ ∩	Apply Direct	Apply Direct	Grangegorman
Sciences & Health												
TU651	Bitheolaíocht Fheidhmeach Applied Biology	6	2	20	5		F2/O6/H7	Irish F3/O6/H7 English O6/H7		252	252	Tallaght
TU654	Staidéar Teicneora Cógaslaine Pharmacy Technician Studies	6	2	32	5		O6/H7	O6/H7	F #	288	288	Grangegorman
TU760	Bithanailís Bioanalysis	7	3	25	5		F2/O6/H7	O6/H7		300	307	Tallaght
TU751	Eolaíochtaí Bitheacha Biosciences	7	3	35	5		O4/H7 X	O6/H7		410	430	Grangegorman
TU752	DNA 7 Anailís Fhóirínseach DNA & Forensic Analysis	7	3	15	5		F2/O6/H7	O6/H7		422	430	Tallaght
TU754	Fisic Thionsclaíoch 7 Chomhshaoil Industrial & Environmental Physics	7	3	15	5		O4/H7 X	O6/H7		250	299	Grangegorman
TU762	Ceimic Mhíochaineach 7 Eolaíochtaí Cógaisíochta Medicinal Chemistry & Pharmaceutical Sciences	7	3	25	5		O4/H7 X	O6/H7		347	346	Grangegorman
TU761	Dáiliúchán Oftalmach Ophthalmic Dispensing	7	3	15	5		O3/H7	O5/H7	G #	316	279	Grangegorman
TU763	Eolaíocht Cógaisíochta Pharmaceutical Science	7	3	15	5		F2/O6/H7	O6/H7		352	390	Tallaght
TU755	Eolaíocht (Iontráil Ghinearálta) Science (General Entry)	7	1	40	5		O4/H7 X	O6/H7	I	280	300	Grangegorman
TU851	Ceimic Anailiseach (Comhshaoil, Fóirínseach 7 Cógaisíochta) Analytical Chemistry (Environmental, Forensic & Pharmaceutical)	8	4	25	6	2H5's	O3/H7	O6/H7	H	304	422	Grangegorman
TU889	Bith-theicneolaíocht Biotechnology	8	4	32	6	2H5's	O4/H7	O6/H7	I	421	New in 2024	Grangegorman
TU866	Diagnóisic Bhithleighis 7 Mhóilíneach Biomedical & Molecular Diagnostics	8	4	25	6	2H5's	O4/H7	O6/H7	I	475	487	Grangegorman
TU852	Eolaíochtaí Ceimiceacha le Ceimic Mhíochaineach Chemical Sciences with Medicinal Chemistry	8	4	25	6	2H5's	O3/H7	O6/H7	H	423	454	Grangegorman
TU868	Eolaíocht Tomhais Chliniciúil Clinical Measurement Science	8	4	39	6	2H5's	O3/H7	O6/H7	N #	477	474	Grangegorman
TU864	DNA 7 Anailís Fhóirínseach DNA & Forensic Analysis	8	4	30	6	2H5's	F2/O6/H7	O6/H7		430	440	Tallaght
TU869	Sláinte Comhshaoil Environmental Health	8	4	32	6	2H5's	O4/H7	O6/H7	P #	300	298	Grangegorman
TU881	Eolaíocht an Bhia Food Science	8	4	16	6	2H5's	O4/H7	O6/H7	Q	330	280	Grangegorman
TU870	Cothú an Duine 7 Diaitéitic Human Nutrition & Dietetics	8	4	25	6	3H5's	O4/H7	O6/H7	J ∞ #	555	556	Grangegorman
TU867	Eolaíocht Leighis Medical Science	8	4	43	6	2H5's	O4/H7	O6/H7	I #	522	532	Grangegorman
TU882	Nútraiceodaigh sa tSláinte 7 sa Chothú Nutraceuticals in Health & Nutrition	8	4	40	6	2H5's	O4/H7	O6/H7	P	309	357	Grangegorman

Code	Course	Level	Years	Places	Min number of		Min grade in		Other Requirements	Points 2024 Round 1	Points 2023 Round 1	Location
					Subjects	H5's	Maths	English/Irish				
TU871	Optaiméadracht Optometry	8	4	32	6	2H5's	O3/H7	O6/H7	I #	544	521	Grangegorman
TU875	Cúram Sláinte Cógaisíochta Pharmaceutical Healthcare	8	4	31	6	2H5's	O4/H7	O6/H7	P	381	400	Grangegorman
TU876	Eolaíocht Cógaisíochta Pharmaceutical Science	8	4	30	6	2H5's	F2/O6/H7	O6/H7		383	380	Tallaght
TU877	Teicneolaíocht na Fisce Physics Technology	8	4	15	6	2H5's	O3/H7	O6/H7	K	357	310	Grangegorman
TU880	Fisic le hEolaíocht Sonraí Physics with Data Science	8	4	15	6	2H5's	O3/H7	O6/H7	M	371	357	Grangegorman
TU878	Fisic le Fuinneamh 7 Comhshaoil Physics with Energy & Environment	8	4	15	6	2H5's	O3/H7	O6/H7	K	363	395	Grangegorman
TU879	Fisic le Fisic Mhíochaine 7 Bithinnealtóireacht Physics with Medical Physics & Bioengineering	8	4	15	6	2H5's	O3/H7	O6/H7	K Δ	339	321	Grangegorman
TU872	Cothú Sláinte Poiblí Public Health Nutrition	8	4	25	6	3H5's	O4/H7	O6/H7	I #	390	477	Grangegorman
TU854	Eolaíocht (Ghinearálta) Science (General Entry)	8	1	30	6	2H5's	O3/H7	O6/H7	14 L	440	474	Grangegorman
TU855	Eolaíocht le Nanaitheicneolaíocht Science with Nanotechnology	8	4	25	6	2H5's	O3/H7	O6/H7	K	326	328	Grangegorman
Social Sciences & Education												
TU791	Staidéar Sóisialta Feidhmeach - Cúram Sóisialta Applied Social Studies in Social Care	7	3	55	5		F2/O6/H7	O6/H7	#	281	300	Blanchardstown
TU792	Forbairt Pobail 7 Ógra Community & Youth Development	7	3	44	5		F2/O6/H7	O6/H7	#	AQA	AQA	Blanchardstown
TU790	Oideachas & Cúram na Luath-Óige Early Childhood Education & Care	7	3	55 (B) 55 (T)	5		F2/O6/H7	O6/H7	5 #	AQA	AQA	Blanchardstown or Tallaght
TU997	Cleachtas Cúraim Shóisialta Applied Social Care	8	4	66	6	2H5's	F2/O6/H7	O6/H7	#	301	300	Tallaght
TU991	Staidéar Sóisialta Feidhmeach - Cúram Sóisialta Applied Social Studies in Social Care	8	4	55	6	2H5's	F2/O6/H7	O6/H7	#	303	308	Blanchardstown
TU992	Forbairt Pobail 7 Ógra Community Development & Youth Work	8	4	33	6	2H5's	F2/O6/H7	O6/H7	#	237	235	Blanchardstown
TU995	Oideachas Luath-Óige Early Childhood Education	8	4	44	6	2H5's	O6/H7	O6/H7	#	310	310	Grangegorman
TU989	Oideachas & Cúram na Luath-Óige Early Childhood Education & Care	8	4	55 (B) 55 (T)	6	2H5's	F2/O6/H7	O6/H7	5 #	260	260	Blanchardstown or Tallaght
TU996	Cúram Sóisialta Social Care	8	3	44	6	2H5's	O6/H7	O6/H7	#	363	366	Grangegorman
Sports & Leisure												
TU735	Bainistíocht agus Cóitseáil Spórt Sports Management & Coaching	7	3	25	5		F2/O6/H7	O6/H7	#	280	290	Blanchardstown
TU736	Eolaíocht Spórt 7 Sláinte Sports Science & Health	7	3	15	5		F2/O6/H7	O6/H7	#	451	451	Tallaght
TU737	Staidéar Spórt Sports Studies	7	3	40	5		F2/O6/H7	O6/H7	#	301	300	Tallaght
TU936	Eolaíocht Spórt 7 Sláinte Sports Sport Science & Health	8	4	25	6	2H5's	F2/O6/H7	O6/H7	#	451	451	Tallaght
TU955	Bainistíocht Spórt 7 Fóillíochta Sports & Leisure Management	8	4	35	6	2H5's	O4/H7	O6/H7		235	262	Grangegorman
TU935	Bainistíocht 7 Cóitseáil Spórt Sports Management & Coaching	8	4	55	6	2H5's	F2/O6/H7	O6/H7	#	300	300	Blanchardstown

SUBJECT KEY

1. 2nd Year Options: Biosciences, Industrial/Environmental Physics or Medicinal Chemistry & Pharmaceutical Sciences.
2. On application choose ONE location: Blanchardstown (BSB) or Tallaght (BST) - choice of location guaranteed.
3. On application choose from Business (BUS), Business with IT (BIT) or International Business (INB). Applicants who are undecided on choice should choose General Entry (GEN) and selection option following orientation.
4. On application choose ONE of the following: Blanchardstown (AFB) or Tallaght (AFT) - choice of location guaranteed.
5. On application choose ONE location - Blanchardstown (ECB) or Tallaght (ECT) - choice of location guaranteed.
6. 2nd Year Options: Computer Engineering or Mechatronic Engineering.
7. 2nd Year Options: Building, Civil, Computer/Communications, Mechanical, Structural, Electrical/Electronic or Manufacturing/Design.
8. 2nd Year Options: Computing with Software Development or IT Management.
9. 2nd Year Options: Electronic Engineering or Engineering Software.
10. On application choose from international Business (INB), Management (MGT) or Marketing Management (MKT).
11. With later specialisation in: Mechanical Engineering or Automation Engineering.
12. With later specialisation in: Automation Engineering, Biomedical Design or Mechanical Engineering.
13. Option to pursue 1st Year Level 8 Engineering (General Entry) or 2nd Year Engineering Degree streams in Engineering Reliability Management, Mechanical, Automation, Electronics/Communications, Civil, Electronic/Control or Building, Electrical Services.
14. 2nd Year options: Analytical Chemistry (Environmental Forensic and Pharmaceutical), Biomedical & Molecular Diagnostics, Chemical Sciences and Medical Chemistry, Culinary Science, Food Innovation or Nutraceuticals in Health & Nutrition.

- A At least H4 in one of French, German, Irish, Italian or Spanish.
- B At least H4 in one of: French, German, Italian or Spanish.
- C At least H4 in one of Art, Construction Studies, Design & Communication Graphics, Engineering or Technology.
- D Or at least H4 in Applied Mathematics if combined with a minimum grade of H6 in Mathematics.
- E At least O6/H7 in one of Physics, Chemistry, Physics & Chemistry, Biology, Agricultural Science or Home Economics.
- F At least O6/H7 in Physics, Chemistry, Physics & Chemistry, Biology or Home Economics.
- G At least O4/H7 in one of Physics, Chemistry, Physics & Chemistry, Biology, Agricultural Science, Home Economics, Applied Mathematics or Engineering.
- H At least a H4 in one of: Physics, Chemistry, Physics & Chemistry, Biology or Technology.
- I At least H4 in one of: Physics, Chemistry, Physics and Chemistry, or Biology.
- J At least H4 in Chemistry.
- K At least H4 in one of: Applied Mathematics, Physics, Chemistry, Physics & Chemistry, Biology, Mathematics, Agricultural Science, Engineering, Technical Drawing, Technology, or Design and Communication Graphics.
- L At least H4 in one of: Physics, Chemistry, Physics and Chemistry, Biology, Agricultural Science, Engineering, Technology or Applied Mathematics.
- M At least H4 in one of: Applied Mathematics, Physics, Chemistry, Physics and Chemistry, Biology, Computer Science, Agricultural Science, Engineering, Technical Drawing, Technology or Design and Communication Graphics.
- N At least H4 in one of: Mathematics, Applied Mathematics, Physics, Chemistry, Physics and Chemistry, Biology, Agricultural Science, Engineering or Technology.
- O At least O4/H7 in one of: Physics, Chemistry, Physics & Chemistry, Biology, Applied Mathematics, Home Economics or Agricultural Science.
- P At least O4/H7 in one of: Physics, Chemistry, Physics & Chemistry or Biology or Agricultural Science.
- Q At least O4/H7 in one of: Physics, Chemistry, Physics & Chemistry or Biology, Applied Mathematics, Home Economics or Agricultural Science.

- * Applicants will be advised of and must attend a suitability test & interview.
- ∩ Direct Application to TU Dublin, not on CAO. Students will be advised and must attend a suitability interview.
- # Students must undergo Garda Vetting.
- Δ Garda Vetting required for some but not all placements.
- Ω Applicants will be advised of and must submit a portfolio in March.
- ¶ Applicants will be advised of and must attend an audition/interview in March/April.
- X Or Applied Mathematics.
- † Includes score for suitability test/interview/portfolio/audition.
- \$ Includes minimum score of 110 for interview and aptitude test.
- AQA AQA All Qualified Applicants.
- ∞ Anyone with a medically diagnosed food allergy (note: not a food intolerance) should be aware that, in this programme, you will come in contact with food.

Siúl Ghasta ar OT Baile Átha Cliath TU Dublin at a Glance



5
campuses



8k
graduates per year



26%
of new undergraduate
entrants enter via access
routes



FE 20%
of national applications



27k+
Students



1:16
Staff : Student Ratio



Craft Apprenticeships
24%
of the national provision



Athena SWAN
Bronze Award



Award Winning
Staff



100+
Clubs & Societies



Rank 72
SDG 11 Sustainable Cities
and Communities



Rank 29
SDG 13 Climate Action

Láithreacha ár gCampas

Our Campus Locations



At TU Dublin, we have five distinct campuses across Dublin City. Our campuses are located in Aungier Street, Blanchardstown, Bolton Street, Grangegorman and Tallaght. While each campus differs in size and personality, as a student, not only will you get a third-level qualification from Ireland's second largest University, you will also have access to state-of-the-art facilities.

Gráinseach Gormáin

Grangegorman

Our campus at Grangegorman, which is the largest investment in Higher Education in Ireland in over a century, brings together many of our Dublin City activities in one vibrant, cutting-edge campus, providing our students with an incomparable educational experience.

Grangegorman has beautifully restored a historic part of Dublin City, based in the heart of the city between Smithfield and Stoneybatter, with entrances from Broadstone, Stoneybatter and North Circular Road. The campus is the beating heart of this area.

The campus currently accommodates 10,000 students in our new buildings, the East Quad and the Central Quad, which will grow to 15,000 in the coming years with the opening of the West Quad. The Academic Hub & Library in Grangegorman will be ready for students in the 2024/2025 academic year, providing a library and learning spaces for the campus, including the Career Development Centre, the Maths Learning Centre, and Disability Support Services.

In keeping with our commitment to sustainability, TU Dublin is committed to promoting sustainable modes of transport. The campus is fully pedestrianised, and we encourage using public transport to access the campus. The Green Luas Line stops twice on the campus at Broadstone and Grangegorman and is a very short walk of ten minutes from O'Connell Street via Constitution Hill.





Sráid Aungier Aungier Street

Our Aungier Street campus, one of three Dublin City Centre locations, specialises in business related courses. With over 5,000 students, it is the largest business school in Ireland.

The campus, located on a 26,000sqm site on Aungier Street in Dublin 2, is built on the historical site of the former Jacob's factory. The campus is close to the Green Luas line stop at St Stephen's Green and a range of cross-city Dublin Bus routes stop outside the campus, including the 15, 16, 140, 83, 122, and 68. The campus is a five minute walk from Dame Street, which is also serviced by a multitude of bus routes.

It is anticipated that activity on this campus is scheduled to move across the Liffey to our flagship campus in Grangegorman, on completion of the West Quad in 2028.



Sráid Bolton Bolton Street

Our Bolton Street campus has been a centre for technological education for over 100 years. This three-storey neo-classical building was designed by CJ McCarthy and was built in 1908. It has since been extensively extended and retains many of its ornate features.

Specialising in the areas of Engineering and the Built Environment, the campus is fully equipped with computer and electronic labs, lecture theatres with the latest audio-visual equipment and learning aids, fully equipped workshops, a library, restaurants, students' union area, and student recreation area.

Bolton Street is centrally located, just a five-minute walk from both O'Connell Street and the Grangegorman campus, is serviced by a wide choice of public transport options, including the Green and Red Luas Lines.





Baile Bhlainséir Blanchardstown

Our Blanchardstown campus, based in North West Dublin, is home to over 3,500 students. The campus is located on a 22.5-hectare site within the IDA College Business & Technology Park, Blanchardstown Road North, Dublin 15.

The modern campus comprises eight buildings, with a total area of over 22,000 sqm. The campus is fully equipped with computer labs, electronic labs, lecture theatres with the latest audio-visual equipment and learning aids, fully equipped workshops, library, restaurants, sports hall, fitness centre, students' union area and lots of parking for bicycles.

Construction is currently underway on a new building, Áras Geal, due to open in 2024/25 which will consist of classrooms,

IT laboratories, informal learning resource space, administration space and ancillary spaces.

To complement the many public transport options serving the area, the university operates a dedicated shuttle bus throughout the academic year, which runs between Coolmine train station, serving selected stops in Dublin 15, including Blanchardstown Shopping Centre, where it links with Dublin Bus and Go-Ahead services.

In addition to the greater Blanchardstown area and the north and west of Dublin City, the campus also attracts students from neighbouring counties of Meath, Kildare, Cavan, Louth and beyond.



Tamhlacht Tallaght

Our Tallaght campus, based in South West Dublin, is home to over 5,000 students. The campus is located on an 18-hectare site between Old Blessington Road, Belgard Road and Greenhills Road in Tallaght, Dublin 24. The campus is fully equipped with lecture theatres comprising of the latest audio-visual equipment and learning aids, science, electronic and computer labs, state-of-the-art culinary kitchens, restaurant, library, coffee shop and students' union area.

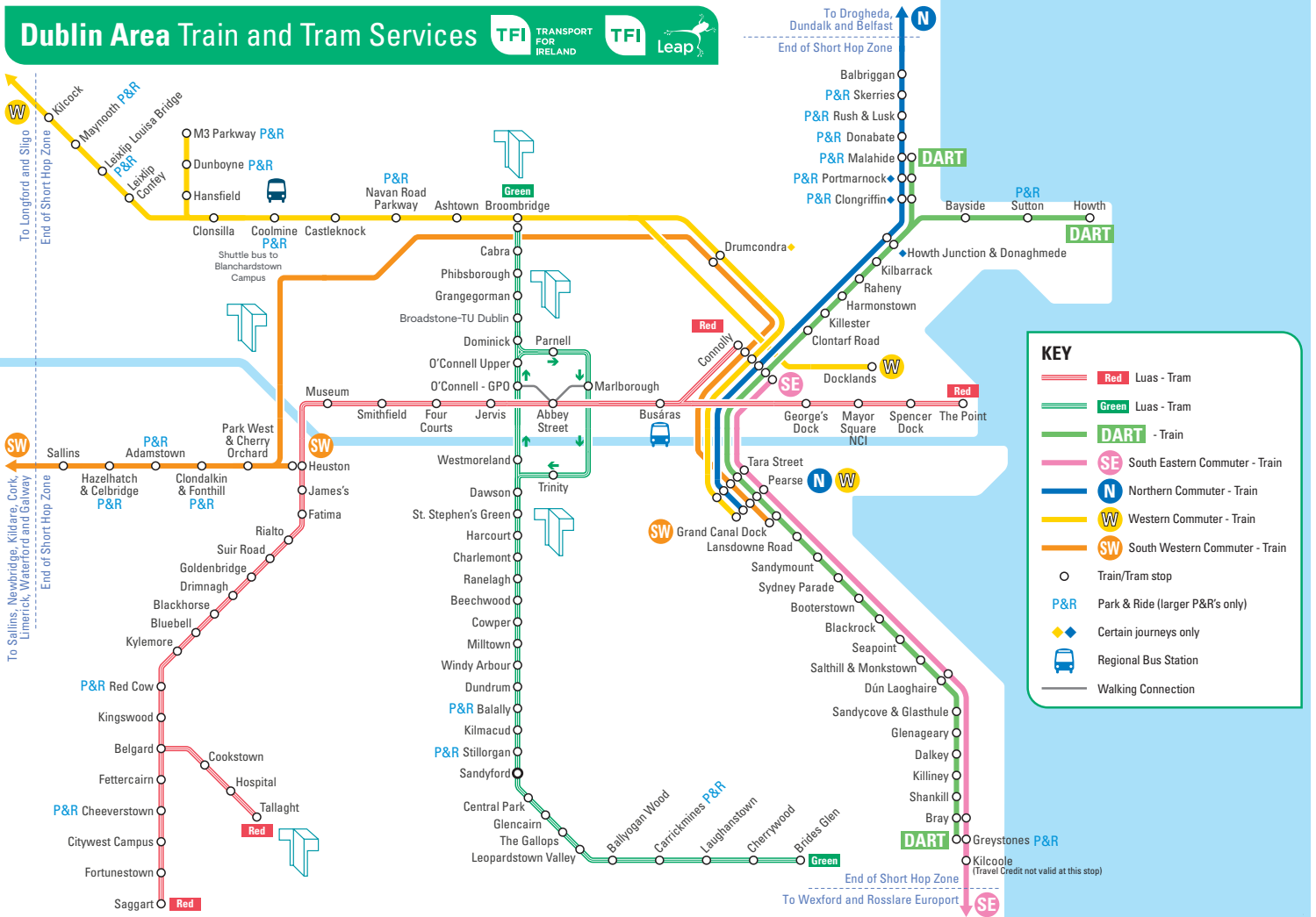
We are currently developing new a multidisciplinary building on the Tallaght Campus which will enhance the learning experience for students of hospitality, culinary arts, engineering, and apprenticeship activities. This follows the recent opening of a Sports Science, Health and Recreation building, which offers state of the art facilities such as laboratories, a fitness suite, an exercise medicine laboratory, a sports hall, and additional lecture theatres. These developments underscore the university's dedication to fostering research and teaching and to creating a modern and comprehensive learning environment for students in Tallaght.

The campus is easily accessible using the Red Luas Line. A range of cross-city Dublin Bus routes stop outside the campus, including the W2 and S8.



Ag taisteal chuig ár gCampais

Getting to our Campuses



ON THE BUSES!

Dublin Bus: Operates within the vicinity of all campuses. Check out the best bus route on the Dublin Bus website dublinbus.ie.

Bus Eireann: Operates within the vicinity of all campuses. Making TU Dublin accessible from Ashbourne, Cavan, Carlow, Dundalk, Drogheda, Kildare, Kells, Mullingar, Naas, Navan and Trim. Visit buseireann.ie.

Private Providers: Matthews Coaches (Dundalk), Collins Coaches (Monaghan), Dublin Coaches (Kildare Village).

Orbital Routes: The 139 orbital route operates between Blanchardstown and Naas. The W4 orbital route operates between the Square in Tallaght, Grange Castle Business Park, Liffey Valley Shopping Centre and Blanchardstown Shopping Centre.

Shuttle Bus: Connecting the Maynooth Train line to Blanchardstown. Operating at selected times between Coolmine Train Station, Blanchardstown Shopping Centre to the Blanchardstown campus.



ON YOUR BIKE!

1 in 10 students cycle to college and it's a great way to keep fit and save money. Use the Transport for Ireland Cycle Planner app to identify the shortest, safest route to your campus. Most TU Dublin sites have secure bike racks and onsite showers for cyclists.



LUAS, DART & IRISH RAIL

Luas Green Line serves TU Dublin at Grangegorman, Bolton Street and Aungier St. Luas Red Line is convenient to TU Dublin at Tallaght, Bolton Street and Grangegorman. Check out luas.ie.

Irish Rail and Dart stations at Heuston Station, Broombridge, Connolly Station, Pearse Street, and Tara Street are in walking distance or have easy bus and Luas connections to all city centre campus locations. Visit irishrail.ie.

For detailed information on travel options to each of our campuses, please scan the QR code provided.





Lóistín

Accommodation

Choosing your location

Our campuses are across Dublin, including the city centre and our Blanchardstown and Tallaght campuses. When considering where to live, it is essential to look at transportation links (public transport, walking or cycling routes), local amenities, housing costs, and the general feel of the area.

Use Google Maps to look at your transport options to campus before choosing your accommodation. Living close to your campus not only makes commuting more affordable and convenient but also supports sustainability and enhances your student life experience.

Host Family accommodation

Host families let out a room in their house and offer flexible stays of 5 to 7 days weekly, with options for shorter durations to suit different needs. With our newly introduced rent cap policy, monthly rents range from €400 to €750 per month. Typically, payment is made for the weeks during the academic term.

- Cost includes utilities - no need to transfer bills into your name
- Some host families provide a light breakfast or evening meal
- Flexibility in starting and finishing term
- Ideal for your first year for lots of reasons: cost, comfort, security...and parents' peace of mind!
- Enjoy a warm, homely atmosphere perfect for easing into independent living

Host family accommodation can be found on tudublinstudentpad.ie. Incoming students can use '1234' as a student number to register but must email studentaccommodation@tudublin.ie for access confirmation. Before committing, visit the home in person and never pay a deposit before meeting the host and viewing the room.

Purpose Built Student Accommodation (PBSA)

PBSA's provide a unique living experience tailored to the needs of students. These residences are not only a place to live but a community designed to support your studies, social life, and wellbeing.

TU Dublin has partnered with Mezzino Student Living, providing students with exclusive access to a block of rooms across several prime city locations. To register your interest, visit Mezzino Student Living: www.mezzino.com/tudublin-accommodation-partner/.

On Campus accommodation

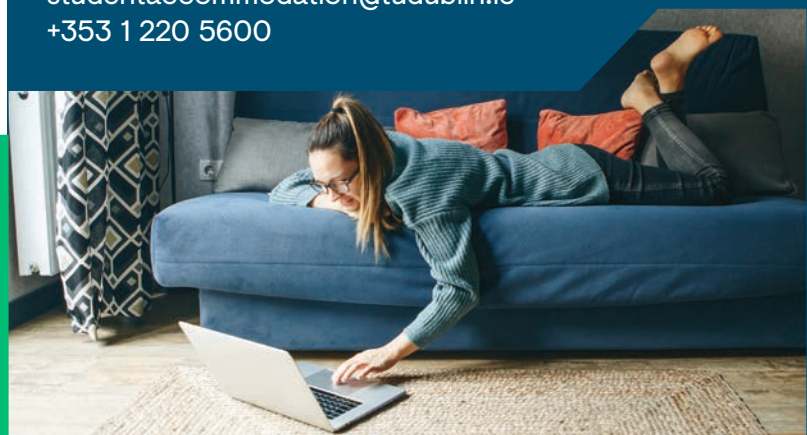
While we currently don't have on-campus accommodation, we have hundreds of host family and PBSA room options to suit your needs. Selecting the right accommodation significantly enhances your university experience. If you need assistance or have any questions regarding student accommodation, we are here to help.

Contact Us

studentaccommodation@tudublin.ie
+353 1 220 5600



NB. Do not pay a deposit on any private rented accommodation until you have seen the accommodation in person or have asked someone known to you to visit the property. Use services like Secureprop for rental scam protection.





Aontas na Mac Léinn Students' Union

TU Dublin Students' Union represent the interests and voices of almost 27,000 TU Dublin students. We work for you and provide a range of services and supports to help you make the most of your university experience and have the best year possible.

The core work of the SU is to elect and support all class reps in the University, to represent your voice on decision making committees, to run campaigns on Education, Welfare and Equality topics, to organise events, run activities and promos, and to provide impartial and confidential advice for any issues you may experience during your time in university.

The Officers are elected by students to speak for students on any issues or concerns that arise. We work closely with TU Dublin to try to resolve issues, to ensure you have the best experience possible during your college years. We have elected representatives sitting on boards and committees across the University, this means the student voice is expressed at all levels. As a member organisation of USI (Union of Students Ireland) we not only represent students on a local level in TU Dublin but also on national issues.

University should be a varied experience that offers students not just the opportunity to gain world class qualifications, but also to grow, explore, try new things, find their tribe and make lifelong friends along the way. Students often learn as much out of the classroom as they do in it so, TUDSU offer a range of events and activities across our campuses for students to get involved, have some fun and meet new people.

A key area of work we are passionate about this year is increasing the diversity in our democratic system. The students in TU Dublin are from diverse cultural and social backgrounds, with diverse needs and abilities, this needs to be reflected in the voices representing students. We are striving to increase the diversity in our class reps, student council, and elected reps. This is something our whole team is committed to. We hope to see students get involved and have lots of fun this coming year.

Check out tudublinsu.ie for all our details, then contact your local SU office to find out more about getting involved and, all our upcoming events and activities. We hope to hear from you soon!



Cad a deir ár gcuid mac léinn

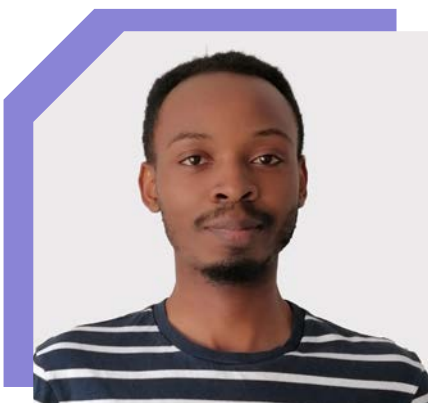
What our students say...



Rebecca Chiru - Pharmacy Technician Studies

If you have a strong interest in science, working in a pharmacy and are dedicated to helping and supporting others, you should consider doing the Pharmacy Technician course. The course explores the theoretical aspects of the Pharmacy Technician role and cultivates essential life skills such as communication, teamwork and critical thinking through project work and hands-on learning experiences.

Pharmacy Practice Theory is covered over the two years where you learn about different over-the-counter medicinal products and their effects, writing prescriptions and working out pharmaceutical calculations. You will work in the labs for modules such as chemistry, biology and microbiology and will learn about Occupational Safety and Health Management, how a drug works and the pharmacology and toxicology effects it has on the body. The work placement in Year 2 gives you an opportunity to work either in a community or hospital pharmacy for six months, allowing you to apply your theoretical knowledge in a real-world setting.



Fabrice Kamenyezi - Computer Engineering

I chose this course of study because it is a mix of both Computer Science and Electrical Engineering. You will learn about both software and hardware at the same time, and this will enhance your career opportunities as a computer engineer. You don't need to be a genius to apply for this course; everything new takes time before you get used to it. I would advise anybody considering applying for this course to be patient and confident, to try your best, and to enjoy yourself.



Anna Aucher - Manufacturing and Design Engineering

I chose to study Mechanical Engineering because I love problem solving and working with numbers. As a student who never studied applied maths, physics, or chemistry for the Leaving Cert, I was quite worried about starting an engineering course. However, with TU Dublin's practical way of learning I got up to speed quickly. I initially completed a Level 7 in Mechanical Engineering and then decided to continue my studies in Manufacturing and Design Engineering at Level 8.

The best aspect of this course is the hands-on experience with state-of-the-art machinery. For example, the course gives students the opportunity to be involved in the creation of products from the beginning to the end, and we get to programme ABB and KUKA robots. This helps to give a real sense of the working world and prepares students for working in big industries on graduation.



Charles Emmanuel Chukwuogor - Business & Management

When I initially researched this course, I found it appealing how broad it was and how many streams were available. I chose the course because I wanted to study something with a study abroad option in the third year, and I really liked that it allowed me to specialize in a wide variety of business disciplines. I believe it is a good choice, because it allows students ample time to later select and focus on a specific business stream down the line, in the final years of the course.



Aileen Wilson - Early Childhood Education & Care

I chose Early Childhood Education & Care after previously completing a QQI Level 5 in Early Childhood Care and Education. The course has a wide variety of modules which gives a good understanding of working with young children and how their minds develop in the early years. Some of the modules covered are Outdoor Learning, Child Development, Art, Music, & Drama and Movement. It also explores the legal aspect of child welfare. Students also do one semester in Year 2 and Year 3 on work placement, which I found to be hugely beneficial. It gives an insight into pursuing childcare as a profession and putting theory into practice.



Izaak Bannister - Drama (Performance)

Drama was something that I always wanted to pursue. I had done research online about it, but it was during the audition that I realised this was the course for me. It really gave a sense of what a day in the course would be like. The lecturers were very friendly and helpful during the audition, and the modules that were on offer were unique and unlike anything I had seen in any other course.

The Drama Facilitation module is fascinating. In first year, we created and delivered drama workshops to primary school children, and next year we'll be going into more schools and learning centres. It is incredibly rewarding

and offers a completely different outlook on what drama can be! I would advise anybody considering this course to make sure that you can commit. There are long days, and it can be both physically and mentally challenging. However, it is great fun, so just make sure you have the time to be able to get the most out of it.



Hannah Doyle - Management

I was uncertain about what I wanted to study after the Leaving Certificate. But when I learned about the Management course at TU Dublin, I was intrigued by the opportunity to study a wide range of subjects, including Marketing, Accounting, Data Analytics, and Human Resource Management.

The best thing about the course were the lecturers, who made the modules interesting, enjoyable and really helped me to stay engaged. The course also taught me valuable life skills such as presentation skills and how to do well in job interviews; I also became very proficient in using Microsoft Excel.

Alumni Suntasacha

Notable Alumni



Anna Haugh
Irish Chef, Restaurateur
& TV Personality



Caitriona Balfe
Actor



Liam Cunningham
Stage & Screen Actor



Domhnall Gleeson
Actor & Writer



Ellen Keane
Paralympic Swimmer
& Gold Medallist



Alan Joyce
Former CEO Qantas Airways



Aisling Maher
Dublin Senior Camogie Player



Darren Kennedy
TV Presenter & Writer



Aoife Dooley
Illustrator, Author & Comedian



Francis Brennan
Hotelier



Louise Phelan
Former Vice President
Global Operations at PayPal



Paul McCann
Former Managing Partner
at Grant Thornton



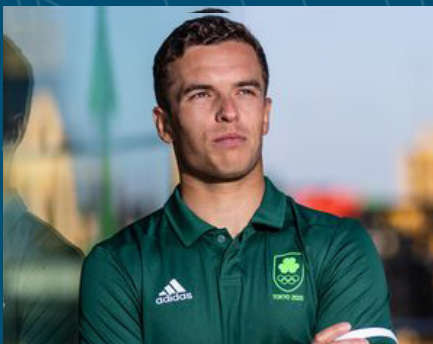
Louise Kennedy
Fashion Designer



Hugh Wallace
Architect & TV Personality



Killian J Sundermann
Actor & Comedian



Sean Waddilove
Irish Olympic Sailor



Brian Howard
Dublin Senior Gaelic Footballer



Carl Mullan
Radio, TV Broadcaster
& Content Creator

GRADUATES

Considering the rich history and heritage of our legacy institutions, TU Dublin has been a trailblazer in technological higher education for over 130 years. Our alumni's impact on innovation, economic and social development, and culture and education, both in Ireland and worldwide, is undeniable. As we move forward, TU Dublin continues to adapt, meeting the changing needs of Ireland in the 21st century.



Saol an Mhic Léinn

Student Life

University life provides a multitude of enriching experiences for students to explore and engage in and TU Dublin offers a dynamic campus environment filled with a diverse range of activities for all our students to enjoy. We are committed to offering a well-rounded university experience that incorporates high quality learning and personal development through a diverse array of extracurricular opportunities.

Starting college can be an exhilarating experience, especially for those who are leaving home for the first time. Moving away from home is a big step and it is crucial to find the right place to live in order to have a happy and successful university experience. While we do not offer student accommodation on-campus, our accommodation office can offer you guidance on the best options available to students.

As a new student, it may take some time to adjust to the fast-paced life of college. We understand that transitioning from school to college can be difficult for some people, which is why we offer a range of support services to guide you through this new chapter of your life.

After you are offered a place on your chosen course, you will undergo a rigorous orientation session. This will cover everything from finding your way around campus, to accessing your class timetables and from meeting your class tutors to learning about our library facilities. You will also learn about all of the various clubs and societies that exist on our campuses. The best way to meet new people at college is to find a club or society where you can make friends with people with the same interests or hobbies. There are over 120 student-led societies and sports clubs across our five campuses with something for everyone, including the arts, fashion, photography, music, soccer, yoga, basketball, tennis, and scuba diving.

During your orientation, you will also learn about all of the supports that are available to you as you embark on your studies, including the Students Union, Counselling Services, Student Health Centres, Disability Support Services and the range of academic supports that will be available to you as a student. First year students are also encouraged to participate in our Peer Mentoring Programme. In this programme, second and final-year students are assigned to work with a group of first-year students. The first-year students can raise questions about their course, assignments, exams and other issues. The mentors share what they have learned to support them (their mentees). This helps the mentees to understand their own experiences better, to feel more comfortable in novel situations and to develop skills to take on new challenges.

As a student of TU Dublin, you will enjoy a fulfilling academic experience and a broad range of extracurricular activities. Prior to commencing your studies with us, we encourage you to get familiar with our campuses, our facilities and our support services by attending one of our open days. There you will get to chat with our staff and students who will be happy to offer you guidance and help on any areas which you may be unsure of.





Societies

In the TU Dublin Societies Office we endeavour to promote and provide a huge and diverse range of student lead volunteering opportunities, societies, activities and events. With a broad choice of societies to choose from, like the Drama Society, Gamesoc, Islamic Society, Dance Society, DJ Society, Photo Society and Debating Society, there's lots more to get involved in! A full list of societies can be found at mystudentlife.tudublin.ie.

Benefits of Societies

- ~ Pursue special interests
- ~ Skills & leadership development opportunities
- ~ Enhancing your CV
- ~ Meet new people
- ~ A break from studying
- ~ Having fun
- ~ Recognition rewards

Want to Start a New Society?

All you need is:

- ~ A good idea
- ~ Great aims and objectives
- ~ Fellow students to support your application

Contact Us

- ~ societies@tudublin.ie

Volunteering

Whether you have one free afternoon each month or you can give an entire evening each week, we can find the right opportunities with you to use your time and talents to make a positive difference in the world:

- ~ Students can get involved in volunteering, social enterprise and sustainability/environmental related activities through our relevant societies which include the SVP Society, Enactus Society and Sustainability Society
- ~ We hold events and campaigns throughout the academic year across all campuses for our students to get involved such as our Volunteering Fair, annual Christmas Appeal and Student Volunteering Awards

Getting involved in Student Volunteering is a fantastic opportunity

- ~ To make a positive difference in the world
- ~ To make friends
- ~ To develop team working & leadership skills while building your confidence.

Register to find out more about volunteering as soon as you start studying at TU Dublin, visit studentvolunteer.ie/tudublin.

Follow us on Instagram at [tudublinvolunteering](https://www.instagram.com/tudublinvolunteering).

Aimsigh Spóirt

Discover Sport

TU Dublin strives to provide opportunities for students to engage in sport and physical activity. It has been an exceptionally busy sporting year, with more of our activity being broadcast live. This allows more people to engage with TU Dublin sport, and recognise the quality of athlete and sporting programme that we provide. This year's successes include our student-athletes chasing an Olympic qualification in Sailing, Rugby 7's, Hockey and Badminton, to Nicole Turner's European Championship successes; reaching the Sigerson Cup Quarter Final stage and the O'Connor up Semi-finals, and the Ashbourne and Ryan Cup Finals.

Sport Clubs

Sports Clubs provide a huge range of opportunities to train, play and compete in sport, no matter what your interest, ability or level. With nearly 40 Sports Clubs to choose from ranging from team sports to water sports and adventure sports, there is something for everyone! If you would like to get fit and healthy, try something new or meet new friends and have a bit of craic, TU Dublin Sport has a Club for you!

Sports Scholarships - Athlete Support Programme

The University Sport Scholarship programme is one of Ireland's most highly regarded performance programmes and is the third level sporting destination of choice for many aspiring sports performers. Through this programme, talented young people are given the opportunity to combine their education with their sporting career by offering the highest standards in sport service provision and academic mentoring support.

TU Dublin has been successful once again in achieving the required standards in dual career support structures and programmes for student athletes. Accordingly, we are fully ASAS Accredited for the period 2024-2026 by the Sport Ireland Institute ASAS – Accreditation for

Student Athlete Support. This year 300 elite athletes representing 32 sports are currently being supported through our University wide Athlete Support Programme.

Sports & Fitness Facilities

TU Dublin offers a diverse selection of high-quality sport, fitness, and performance facilities throughout our campus sites. Whether you are a recreational gym user, team training, participating, or competing in sport or a performance, our sports facilities and programmes will cater for you.

Our facilities operate at a high standard achieving the Outstanding Award under the National Quality Standard award (NQS) accredited by Ireland Active. We strive to deliver top class, exceptional facilities for all our users and provide athletes with the perfect environment for success.

- Synthetic and Natural Grass Pitches
- FIFA approved all-weather soccer pitches
- GAA Synthetic Pitch including Hurling Skills wall
- Sports Hall catering for Basketball, Badminton, Futsal, Volleyball and more
- Sport Performance Gyms
- Fitness Studios & Dressing Rooms

In 2023, a new €14.7 million Sports Science, Health and Recreation building opened on our Tallaght campus with future planning underway for outdoor pitches. The gym facility on our Blanchardstown campus was revamped and updated with additional high performance resistance machines and free weights.

Contact Us

- Gym/Fitness: fitness@tudublin.ie
- Sport Pitch: fieldsport.booking@tudublin.ie
- Sport Clubs: Sport@tudublin.ie



1. Surf Club of the Year 2024
2. Ed Kelly, Irish Rugby 7s Squad
3. Sean Waddilove, Irish Sailor, qualified for Olympic Games Paris 2024
4. Sean Jenkins, Irish Senior Basketball Squad
5. Nicole Turner, Irish Para-Swimmer European Championships 2024 Gold and Bronze Medallist



Gairmeacha, Sochrúcháin Oibre & Erasmus Careers, Work Placement & Erasmus

Career Development Centre

We understand that starting a new chapter in your education journey is exciting, but can also be daunting and you may have questions about your future career. At TU Dublin, we are dedicated to supporting your career development at every stage of your university experience, from the early days of your first year to the critical decisions you'll make in your final year and beyond.

Our Career Development Centre offers a comprehensive range of services tailored to meet your unique needs and empower you to make informed decisions about your professional path. Some of the services we provide include:

Our services include:

- ~ Career Coaching
- ~ Online Resources
- ~ Events/Career Workshops
- ~ Employer Events and Careers Fairs
- ~ Job Hunting Preparation
- ~ Further Study

In addition, the webpage for the course that you are applying for will contain a wealth of information about the broad and varied career options that await you upon graduation. Making decisions about your career can be challenging, but rest assured that we are here to make the process a little easier by offering resources, support, and guidance along the way.

To learn more about the specific supports and services available through our Career Development Centre, visit tudublin.ie/careers.

Work Placement

Work placement is an integral part of many courses at TU Dublin, serving as a bridge between classroom learning and the professional world. It will empower you to apply your knowledge, develop practical skills, and gain invaluable insights into workplace dynamics. By immersing yourself in real work environments, you can assess your compatibility with different career paths and make informed decisions about your future. Work placements not only enhance employability but also foster your personal and professional growth. They offer a glimpse into the requirements and expectations of the workplace, equipping you with the knowledge and experience needed to thrive in your chosen field.

Erasmus

Erasmus+ presents an exciting study abroad opportunity for students enrolled in select courses at TU Dublin. With Erasmus+, you can experience a semester or full academic year studying at another European college or embark on a traineeship in a European company. The benefits are immense: academic enrichment, social connections, personal growth, and cultural immersion. Erasmus+ offers a unique avenue for expanding your horizons, gaining valuable international experience, and broadening your perspective. As an integral component of your qualification at TU Dublin, participating in Erasmus+ opens doors to new knowledge, skills, and intercultural understanding, preparing you for a globalized world, visit tudublin.ie/erasmus.





Seirbhísí 7 Folláine Mac Léinn

Student Services & Wellbeing

Your success at TU Dublin is inextricably linked to your health. We try to create a culture that supports healthy choices, and will empower you to actively look after your own health.

As you start third level, you'll be learning how to manage your lifestyle, creating lifelong habits and attitudes that help to determine your learning, social and emotional growth, health awareness and wellbeing.

Student Life

Student Life provides a range of opportunities for students to engage in a healthy, active, social experience. We hope that you will improve your chances of good wellbeing by getting involved in one or more of programmes or initiatives that take place across our University.

- ~ Access any of our campus based gyms to get physically active
- ~ Join a sports club to feel part of a team
- ~ Find likeminded students in any of our 80+ Societies
- ~ Get a sense of giving back through our volunteering service
- ~ Have fun while being active in any of our social sport and fitness programme

Student Health Centres

Our Student Health Centres provide a holistic approach to health, providing on-campus health care to students. Our service incorporates physical, psychological and social aspects of student health and health promotion.

Counselling Service

The Student Counselling Service is available free of charge to all registered students at TU Dublin, and offers the following confidential supports for a wide range of psychological, mental health, and academic issues:

- ~ One-to-one therapeutic counselling
- ~ Skills sessions to manage specific challenges e.g; anxiety management, procrastination
- ~ Group programmes for ADHD, body acceptance, managing emotions
- ~ Peer Support from trained students
- ~ Online supported mental health programmes via the SilverCloud platform

Disability Support Services

The Disability Support Service aims to ensure that any student with a disability does not experience educational disadvantage and that all students can access and equally participate in and benefit from educational opportunities in our University. The Disability Support Service provides confidential one-to-one needs assessments to all students registered with the service. Following this the relevant supports are put in place based on the recommendations of these needs assessments to enhance the educational experience.

Pastoral Care and Chaplaincy

Students come to the Chaplaincy to:

- ~ Talk to one of the chaplains confidentially
- ~ Seek conversation and support
- ~ Enjoy a place of hospitality & kindness
- ~ Meditate or pray in the Quiet Room
- ~ Enjoy a break between classes
- ~ Experience inter-cultural and religious exchange

Online Resources for Wellbeing

TU Dublin subscribes to Silvercloud - a service offering programmes designed to help you improve and maintain your wellbeing by addressing underlying issues that can have a negative impact on how you would like to live your life. Based on years of clinical research, the programmes are interactive and delivered via an online user-friendly platform.

Ag Láimhseáil an CAO

Navigating the CAO

Discover Your Path to Success

When it comes to applying to university, the journey may not always be a straight line to your dream course, but fear not! By thinking strategically and embracing flexibility, you can make a big difference in achieving your ultimate goal.

Every year, many students miss out on potential offers from the CAO because they limit their options when completing their application. Don't let that happen to you! When filling out your CAO form, it's crucial to consider more than just that one course you like. Explore all the possibilities that can lead you to your desired outcome. Remember, there are multiple pathways to most careers, and the more open-minded you are with your CAO choices, the greater your chances are of reaching your goals.

To ensure a smooth application process, make sure you check key dates on the CAO website and submit your application on time. Please note that missed deadlines are not accommodated, so staying on top of these dates is essential.

The CAO website offers valuable video resources, including a detailed demo of the application process. We highly recommend taking a look at these resources. Investing a little time at the beginning will save you a lot of heartache later on by ensuring that everything is completed and submitted correctly.

If you have access to a Guidance Counsellor at your school or college, consider booking some time with them to research your best options. Their knowledge and expertise can be invaluable to your decision-making process. Additionally, reach out to people who have gone through the application process before. Most people will be more than willing to help you avoid any pitfalls they encountered along the way.

Making your choices

When selecting a course, it's important to think about the career you envision or the field you'd like to work in. Once you have clarity on that, it's time to work backward and explore the available courses that align with your aspirations. Determine how each course can contribute to your desired career.

On your CAO application, you can apply for up to twenty courses: ten on the level 8 list and ten on the level 6/7 list. If you only complete the level 8 list and disregard the level 6/7 options, you essentially cut your chances of receiving a college course offer in half.

Many applicants only consider Level 8 courses, overlooking the Level 6/7 options available. Others may find themselves undecided about which course to choose. However, there are numerous benefits to including both level 6 and 7 courses in your CAO choices.

Firstly, the points and entry requirements for level 6/7 courses are often lower than their level 8 equivalents, making them more attainable. Secondly, a more flexible approach to education appeals to many students. By initially committing to a two or three-year level 6/7 course, you can choose to graduate upon completion or choose to progress into an advanced year of a related level 8 course. Our flexible education model also allows graduates to return at a time that suits them best to complete a level 8 qualification.

So, take the time to explore all your options, think strategically, and consider the bigger picture. Your path to success at university begins with an open mind and a willingness to embrace the possibilities. Start your journey now and let your dreams flourish at the university that will help you achieve your goals.

Unlock Your Potential at University

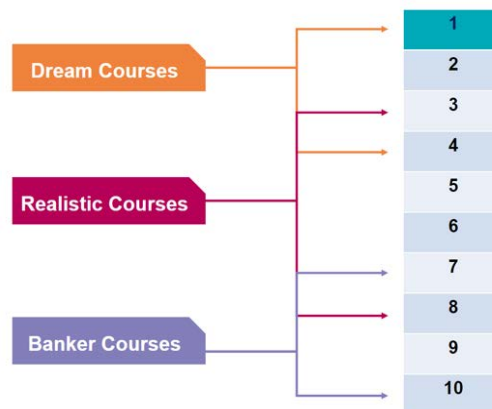
The information provided above applies to all students applying to the University through the CAO, regardless of whether you are a Leaving Cert student, coming from higher education, or a mature student. At TU Dublin we believe that everyone deserves the opportunity to pursue their desired course, and we are here to support you every step of the way.

We understand that many students hesitate to select their dream course out of fear that the required points are unattainable. It's important to remember that points vary each year, reflecting the demand for the course. Even the university offering the course cannot predict the exact points required. So, don't let those worries hold you back. Dare to dream and list your desired course in order of preference.

In some cases, students excel in the Leaving Cert and achieve more points than they initially anticipated. This is another reason to include your dream course in your choices. You never know what you're capable of until you give yourself the chance.

Once you've added your dream course, it's time to think pragmatically and include courses where you believe you have a strong chance of acceptance. Lastly, add courses that you are confident you can achieve. By following this strategy and ensuring you fill out all your choices on the CAO form, you set yourself up for success and prepare for various possibilities.

As mentioned earlier, there are numerous benefits to considering level 6/7 courses. On the next page, we have outlined some scenarios that demonstrate how choosing these courses can help students achieve their goals.

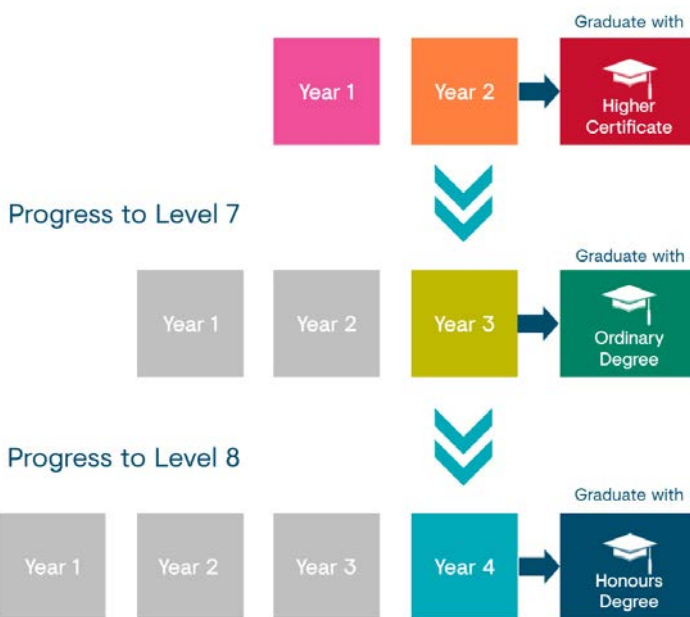


At TU Dublin, we embrace diversity and welcome students from all backgrounds. We believe in your potential and we are dedicated to providing a supportive environment where you can thrive academically and personally. By choosing our university, you open doors to a world of opportunities and set yourself on a path to a fulfilling future.

Don't let any doubts or uncertainties hold you back. Seize the chance to pursue your passions and embark on an enriching educational journey. The possibilities are endless, and we can't wait to see what you'll achieve. Start shaping your future today at TU Dublin.

Progression Pathways

Commence Level 6 course



*Progression is to Year 3 on some Level 8 courses

Dul Chun Cinn Progression



Progression from Level 6/7 to Level 8

In today's ever-changing educational landscape, it's crucial to be aware of the various routes students can take to achieve their goals. TU Dublin offers a unique approach to progression from Level 6 and Level 7 courses to Level 8 degrees, providing flexibility and accessibility that sets it apart from traditional Irish universities.

Embracing Flexible Pathways

Traditional universities often emphasise direct entry into Level 8 courses, which can be challenging for some students who struggle to the high entry requirements. In contrast, TU Dublin acknowledges that each student's academic journey to achieving a degree is unique and non-linear. By providing structured pathways from Level 6 and 7 to Level 8, TU Dublin allows students to gradually build their qualifications step-by-step, while also gaining valuable knowledge and experience.

For instance, students who start with a Level 6 Higher Certificate or a Level 7 Ordinary Degree at TU Dublin have the opportunity on many courses to progress to a Level 8 Honours Degree. This progression is often seamless, with many students entering directly into the third year of a related Level 8 course, depending on their academic performance. This pathway not only enhances accessibility but also provides students with the time to mature academically and personally, setting them up for greater success at the Level 8 stage.

Why Choose TU Dublin

The structured progression from Level 6/7 to Level 8 offers several advantages that we would encourage you to highlight to your students:

Lower Entry Criteria: The points and entry requirements for Level 6 and 7 courses are typically lower, making higher education more accessible to a broader range of students.

Step-by-Step Progression: Students can progress to a Level 8 degree after completing a Level 6 or 7 course, often entering into the third year of a related program. This gradual progression allows students to build confidence and competence before undertaking the demands of an honours degree.

Flexibility in Timing: TU Dublin's flexible education model means students can return to complete their Level 8 qualification at a time that suits them best, accommodating both personal and professional circumstances.

Career-Focused Education: TU Dublin's courses are designed with employability in mind. By progressing through Level 6, 7, and eventually Level 8, students can gain practical skills and knowledge that align closely with industry needs, thereby increasing their career prospects.

Industry focussed approach to learning:

TU Dublin adopts a practical, industry-focused approach to education that emphasises real-world application of what is learned in the classroom. The curriculum is designed in collaboration with industry partners, ensuring that students acquire the skills and knowledge needed to meet current market demands. Through hands-on projects, internships, and work placements, students gain valuable experience and insights into their chosen fields, preparing them for successful careers.

A Supportive Environment for All

At TU Dublin we focus not just on academic achievement, but also on supporting students' personal growth and development. The university welcomes students from all backgrounds and provides a nurturing environment where they can thrive. Whether students enter directly into a Level 8 course or take a more gradual route through Levels 6 and 7, TU Dublin is dedicated to helping them achieve their full potential.

Iarratasóirí QQI

QQI Applicants

TU Dublin is the largest provider of third level education to students presenting with QQI (formerly known as FET/FETAC) Level 5/6 awards. Over 500 first-year places are available, for applicants, on our Higher Certificate, Ordinary Degree and most Honours Degree courses.

Here are some key points to keep in mind if you're considering studying a QQI course to access a course in TU Dublin in the future:

- QQI applicants must apply for their desired course at TU Dublin via the CAO.
- In order to apply, you must have obtained a full major award. A Component Certificate (minor award) is not sufficient.
- The best 8 modules of your award are used for ranking purposes.
- If you've achieved your major award over more than one academic year, you'll need to apply to QQI for a major award.
- Full QQI Level 5/6 awards eliminate the need to meet minimum entry requirements based on Leaving Certificate results. Your QQI Level 5/6 award is accepted in its own right. However, you will still need to achieve the required points set for your course. QQI points are set separately to Leaving Certificate points. You can use the QR code provided on this page to access a QQI points calculator for reference.
- While the process of accessing university is competitive, QQI students are not in direct competition with Leaving Cert students for places. QQI offers are provided through a quota system.
- QQI Entry Requirements for courses differ, so please refer to the relevant course page for specific details on the QQI Entry Requirements for that course.

You can read more about further education options online at careersportal.ie, qqi.ie and qualifax.ie. You can also contact our Admissions team for advice on your pathway by email at admissions@tudublin.ie.

We will hold a [QQI Information Session on Wednesday 22 January 2025](#). Please check our website for updates.



Meet Jacob, who is contemplating his pathway to becoming an Engineer. Jacob wants to study engineering at TU Dublin, but his Leaving Cert results have fallen short for the courses he had in mind. As an alternative route of entry, Jacob's Guidance Counsellor suggests studying a QQI qualification for a year.

After careful consideration, Jacob selects the QQI course - 5M5010 Construction Technology, as it meets the QQI minimum entry requirements for TU805 Engineering, TU833 Construction Management and TU837 Quantity Surveying in TU Dublin.

To learn more about his chosen QQI course, Jacob visits www.qqi.ie and searches for the 5M5010 code. He is delighted to find that the course is being offered at a nearby College of Further Education, easily accessible by bus.

Jacob will need to achieve five distinctions in his QQI course to gain entry to his desired course in TU Dublin and fortunately, he already holds an H4 grade in Leaving Cert Maths, which meets the Maths requirement for matriculation. He plans to work hard to secure the distinctions, but he is also considering listing the engineering program at level 7 on his CAO application, taking advantage of the progression opportunities within the course which will allow him to achieve his level 8 qualification later.

Jacob successfully completes his QQI course achieving the required grades and in Round 0 of the CAO receives his offer notice. He is delighted to have been offered his chosen course at TU Dublin he has been considering, but he is unsure if he is 100% ready to commit to one subject. His Guidance Counsellor suggests taking a year studying a QQI qualification to help him make his mind up and prep for university.

Mic Léinn Aibí

Mature Students



Mature Students Applicants

Whatever your reason for coming back to education – to update your skills, gain a new qualification, achieve a personal goal or ambition, TU Dublin welcomes all mature students.

TU Dublin has a range of supports in place to help you decide what course to take, how to get through the application process and get settled into college life. We will hold a [Mature Student Information Session on Thursday 23 January 2025](#). Please check our website for updates.

What age do I need to be?

To be classified as a mature student, you must be 23 years of age or older on or before 1st January in the year you're applying. You must also be an Irish/EU citizen.

You make your application for admission to the first year of any undergraduate full-time course through the Central Applications Office (CAO).

Submitting your Application

We will assess your application, considering all aspects of your prior learning and work experience. Selection is based on your CAO application, including all supporting documentation as part of your application.

You may be required to sit a suitability test and/or an interview to secure a place. This mainly applies to mature student applicants who do not wish to compete on the basis of a Leaving Certificate or QQI Level 5/6 Award.

We focus on the following when assessing applicants, so you may wish to address the following topics in your personal statement:

- ~ Evidence that the applicant has researched the courses applied for
- ~ Preparation for higher education (recent courses/study)
- ~ Any relevant experience or training
- ~ Awareness of the demands of full-time higher education (workload, finances, impact on personal and social circumstances, etc.)
- ~ Career goals

We recommend mature applicants apply to the CAO by 1st February. Late Applications (excluding restricted courses) will be accepted up to 1st May but places are limited, especially for our more popular courses.

For full details on how to apply to the CAO as a mature student, ensure to read the mature applicants sections on the CAO website at cao.ie/mature and on our website at tudublin.ie/mature.





Iontráil Casta Advanced Entry

If an applicant already holds certified educational achievements and/or work experience in a relevant field, it may be possible to apply for entry to the second or subsequent year of an undergraduate course. This process is known as an “Advanced Entry” application.

The number of Advanced Entry places differs from year to year and the option for advanced entry will depend on availability of places.

EU Applicants make an application for advanced entry through the CAO. Individual course pages on our website will outline if advanced entry is an option. Courses which are open for advanced entry are also listed on the CAO website.

The closing date for advanced entry applications is usually 12th July, however some popular courses may close earlier due to high demand.

Applications are assessed on the basis of certified results and submission of all relevant supporting documentation. Supporting documentation would typically include the following:

- Copies of QQI Level 5 and 6 awards
- Copies of BTEC and other awards
- Transcripts from previous Higher Education
- A CV with information about relevant previous experience with references
- A statement of interest

Offers of places are usually made during the months of July and August and are issued by the CAO via email. Offers are issued subject to the availability of places and in order of merit.

Please note that instruction for all courses at TU Dublin is through English. English language proficiency is required for all undergraduate courses at the University. If English is not an applicant’s first language, such applicants must present one of the English Language qualifications as listed on our website as evidence of competence.

Applicants presenting with third-level qualifications from outside of Ireland must apply and have confirmed by Quality and Qualifications Ireland (QQI) how their third-level qualification compares to Irish qualifications on the NFQ. This service is free of charge and is an advisory service on foreign qualifications. See qqi.ie for further information.

If you have a query on Advanced Entry please email us at admissions@tudublin.ie.





Bealaí Eile Iontrála

Alternative Entry Routes

We are committed to ensuring that all individuals, regardless of financial or other circumstances, are encouraged to consider higher education and are supported in accessing the course that interests and best suits them. We offer a wide range of entry routes, the national schemes such as HEAR and DARE, and also our own Access & QQI Access routes. We also offer a Foundation Programme to help students prepare for higher education.

HEAR, DARE, Access and QQI Access routes are open to school leavers under the age of 23 as of 1 January of the year they are applying. Applications to HEAR/DARE can only be made online through the CAO. Applications to Access & QQI Access are made directly to TU Dublin.

Being eligible for an Access entry route does not guarantee you a place, it places you in a position to compete for a reduced points place once you meet the minimum entry requirements and any specific programme requirements on the course.

Higher Education Access Route (HEAR)

HEAR is a third level alternative admissions scheme for school leavers who have experienced socio-economic disadvantage. HEAR offers places at lower points to school leavers who, due to their socio-economic background, have experienced additional educational challenges in second level education. Eligible applicants who are offered a place through the HEAR route will receive academic, personal and social supports in TU Dublin. For more information, check out accesscollege.ie/hear.

Disability Access Route to Education (DARE)

DARE is a third level alternative admissions scheme for school leavers whose disabilities have had a negative impact on their second level education.

DARE offers places at lower points to applicants who as a result of having a disability have experienced additional educational challenges in second level education. Once you have accepted your place, additional supports will be provided to assist you in your studies in TU Dublin. For more information, check out accesscollege.ie/dare.

Access TU Dublin

Access TU Dublin is a flexible entry route aimed at school leavers from socio-economically disadvantaged backgrounds, who would like to study a full-time undergraduate course at TU Dublin. Eligible students are advised to apply for both the HEAR and Access TU Dublin entry routes. For more information visit tudublin.ie/access.

QQI Access TU Dublin

QQI Access TU Dublin, is an entry route aimed at students, from a socioeconomically disadvantaged background, who have already completed a QQI Level 5 or 6 course and are applying to TU Dublin through the Higher Education Links Scheme (HELS). For more information visit tudublin.ie/access.

Access Foundation Programme

Our Access Foundation course (TU699) is a multidisciplinary one year full-time course that prepares students to pursue undergraduate study at TU Dublin. Students who successfully complete the course will be offered a place on an appropriate undergraduate course at the University. We provide a wide variety of supports to help students adjust to university life so that you gain maximum benefit from your time with us. This course is not offered on the CAO, instead applications are made directly to TU Dublin. Further information on how to apply is available at tudublin.ie/access.



Thuismitheoirí 7 Chaomhnóirí

Parents & Guardians

We are delighted that your family is considering TU Dublin. Sending your child to university is a transformative step in their lives and a significant investment in their future career. During this transitional phase, both parent and student may experience a range of emotions. We anticipate that the joys will outweigh any concerns. As your son or daughter navigates through this important stage of their lives, your support and guidance as a parent or guardian will be crucial.

Why Choose TU Dublin?

In choosing TU Dublin, you can rest assured that your son or daughter will attend one of the top universities, both in Ireland and globally. In 2024, we ranked #851-900 in the overall QS World University Rankings. While TU Dublin is already a leader in STEM disciplines, the University also supports the largest cohort of students of business, media, culinary arts, and the creative and performing arts.

We aim to foster a vibrant, adaptive, and inclusive learning atmosphere in collaboration with our students, offering a top-quality and transformative education that equips our graduates to make their mark in the world.

TU Dublin is committed to actively fostering an inclusive, diverse, safe and respectful institutional culture and there are a wealth of supports available to students throughout their studies. These include a counselling service, student health centres, a disability support service and provision of academic supports for all our students, including a highly successful peer-mentoring programme. There are also more than a hundred different sport clubs and societies across our five campuses.

Our career development services will offer career guidance to students throughout their time in college. In addition to organised career workshops for students, students can also meet one-on-one with our career advisors for assistance with CV writing and interview preparation.

In short, TU Dublin will endeavour to produce a fully rounded, career-ready graduate who is ready to make significant contributions to society.

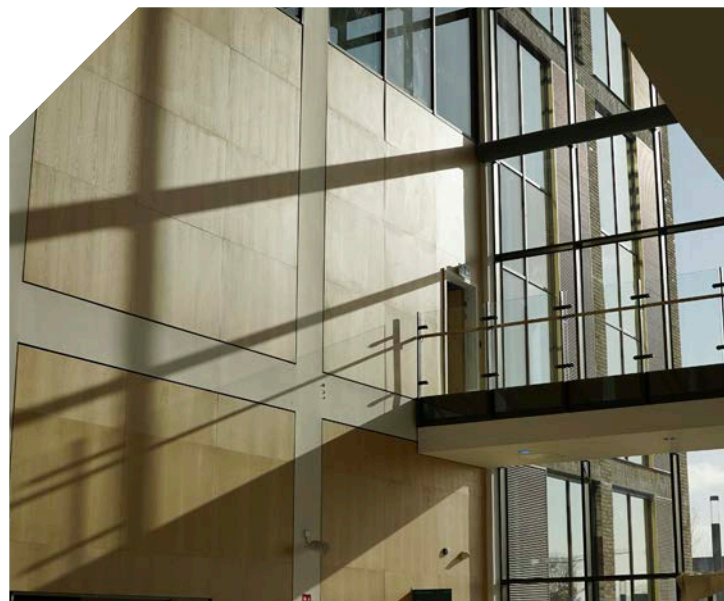
Support for Parents and Guardians

Applying for a course through the CAO can be a daunting process and this time can sometimes be marked with indecision and uncertainty for all involved. Our Admissions Office are on-hand and ready to offer any guidance and assistance required during this time.

Our CAO hub is packed full of detailed guidance on how to make the most of a CAO application, as well as information on Fees & Grants, Student Life and comprehensive details on each of our full time undergraduate courses.

We will host a series of Open Days throughout the CAO season where you will get to see our state of the art facilities and meet our lecturers and students. Visit tudublin.ie/opendays for further details.

If you have any questions as a parent or guardian, please reach out to us via courses@tudublin.ie.



Foghlaim + Obair

Learn + Work

Are you unsure if you want to complete an apprenticeship or go to university? If so, you might be interested in our Learn + Work courses which blends the strength of university education with an apprenticeship style work placement and are designed specifically to create a work-ready university graduate in the shortest possible time.

Each year, students divide their time between full time study blocks in the university and significant periods of paid work placement with industry partners. We have two Learn + Work courses to choose from:

TU655 Higher Certificate in Science in Computing in Networking Technologies (Level 6)

This two-year course is designed for trainee network technicians and was developed in response to the industry's growing need for people who can design, install, and maintain computer systems and IT infrastructure. This course will help you develop the knowledge and skills you need to pursue the many job opportunities in the ICT and Networking field.

Students can also gain Industry Certified Awards, including; Cisco Certified Networking Associate (CCNA), CompTIA A+, CompTIA Security+, Linux Professional Institute (LPIC-1), Microsoft Certified Systems Expert Server Infrastructure (MCSE), VMWare Certified Associate – Cloud (VCA-Cloud).

Our students undertake work placements with our Industry partners, which include the following companies: Auxilion, Citrix, Concern, Eir, Emerald Park, EOS IT Solutions, Equinix, Fujifilm, Lantech, Liberty IT, Macro Evolution Services, Microsoft, MJ Flood, Netspeed, The Collaboratory, Viatel, Vodafone and WiLine.

Prospective students for TU655 apply directly to the university and will be required to undertake an interview.

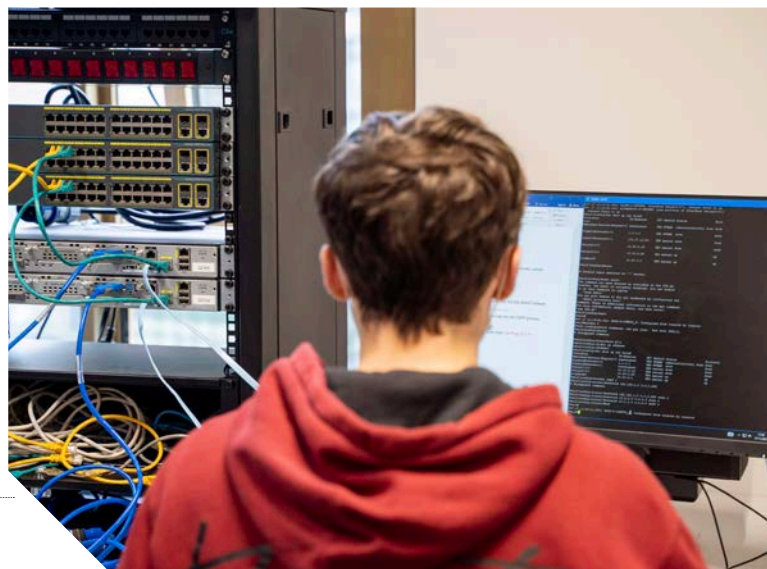
TU722 Bachelor of Science in Process Instrumentation & Automation (Level 7)

Process Instrumentation & Automation involves the measurement and control of physical quantities (temperature, level, pressure, flow and many others) used in advanced manufacturing systems. Engineers use instrumentation and control to monitor and maintain processes for improved production, quality, and safety in manufacturing facilities in the Pharmaceutical, Food & Drinks, Water/Wastewater, Oil & Gas industries among others. This three-year course provides a pipeline of skilled, in-demand work-ready talent into STEM industries through industry partnership.

Our students undertake work placements with our Industry partners, which include the following companies: Alexion, Bonner, Breedon Group, Bristol-Myers Squibb, CalX Instrumentation Services Ltd, EMR Integrated Solutions, Hanley Calibration, Intel, LotusWorks, McL Automation, SGS Gas Analysis Services, West Pharmaceutical Services.

Prospective students for TU722 apply via the CAO and will be required to undertake an aptitude test and interview.

Find out more about our Learn + Work courses on our CAO Hub at tudublin.ie/cao or if you have a question you can email our team at courses@tudublin.ie.



Scoláireachtaí 7 Táillí

Scholarships & Fees

Scholarships

TU Dublin Foundation, an independent registered charity, is dedicated to advancing the mission of TU Dublin by fostering an innovative, responsive, and student-centered teaching and learning environment. Our commitment is to provide quality education to students of all ages and backgrounds. Through the generosity of our alumni, individuals, and partner companies, TU Dublin students receive transformative support through a wide range of awards and scholarships across various disciplines.

For many students, financial assistance is crucial to pursue full-time education. Our scholarships not only recognize their hard work and dedication but also enable them to focus on achieving excellence in their chosen fields. In academic year 2022-23, we awarded €249,531.66 to 136 deserving students through 45 different funds and scholarships. These financial contributions make a significant impact, breaking down barriers and allowing students to fully engage in their academic journey. TU Dublin Foundation offers two primary types of support:

1. Scholarships: These awards are typically based on interviews and criteria agreed upon with the donors, focusing on academic engagement and financial need. Recipients typically receive €3,000 to be used to support their time in University.

2. Awards: Merit-based awards are presented directly to outstanding students or exceptional projects. The monetary value of these awards can range from €500 to €1,000, acknowledging exceptional achievements.

Applying for a scholarship is a straightforward process for registered TU Dublin students. While some scholarships prioritize academic performance, others focus on financial need or personal journey and passion. In most cases, students are required to complete an application form and submit a personal statement or essay. Certain fields, such as Fine Art, Architecture, and Architectural Technology, may require portfolio submissions.

Additionally, shortlisted candidates are often invited to participate in interviews conducted by a panel of internal and external representatives.

Visit tudublin.ie/scholarships to learn more about the remarkable possibilities that our scholarships and awards offer.

Fees

Tuition fees are set annually by the Department of Education & Skills. EU nationals attending a full-time undergraduate course for the first time are normally only required to pay the student contribution fee of €3,000 (cost for 2024), if they meet the residency requirements. The student contribution fees covers the costs of essential student services.

EU nationals who are following a second or subsequent third-level course, depending on the type and duration of the previous course attended, will be liable for tuition fees in addition to the student contribution fee. EU tuition fees for 2024/25 (fees for 2025 not yet available):

- Higher Certificate (Level 6) - €3,250
- Ordinary Degree (Level 7) - €3,250
- Engineering Honours Degree (Level 8) - €4,450
- Other Honours Degree (Level 8) - €3,819

To assist students in paying student fees, the following payment options are in place:

Option 1: Full Payment of Student Contribution & Tuition (if applicable) on Registration.

Option 2: Pay in Instalments.

First Instalment: 25% of fees due on Registration.

Second Instalment: A further 25% of fees due by 31st October 2024.

Third Instalment: Balance of fees due by 31st January 2025.

Option 3: If you have applied for a Student Grant through SUSI. You are not required to make payment at this time pending a decision on your application. You are required to submit your SUSI reference when completing your Online Registration.

Foireann Idirchaidreamh Scoile

School Liaison Team

Our School Liaison Team work closely with Guidance Counsellors, and organise activities and events throughout the academic year showcasing the courses and student life at TU Dublin.

School Visits

A member of our School Liaison Team can visit your school at a time that is convenient for you. We can give a presentation outlining the many courses available at TU Dublin, insights into student life at the university, the various study pathways and tips on how to prepare for college life. Alternatively, we can arrange a virtual presentation to suit your schedule. If you would like to schedule a visit please email school.liaison@tudublin.ie with the preferred day/time, details of your school/college, contact name and number, and we will get back to you promptly.

Open Days

We will host a number of Open Days at our various campus locations throughout the year. Open Days are a great informal way for your students to find out more about facilities at the university and to chat with our student ambassadors who can share their real-life experiences. The School Liaison Team, along with our academic staff, will also be on hand to discuss the various courses and pathways we have to offer. Visit tudublin.ie/openday.

Campus Tours

Experiencing our vibrant campuses in person is the best way to learn more about the University. We can organise group tours, where we will take you on a guided tour and answer your questions along the way. A typical campus tour will last just over an hour. We will facilitate visits to our campuses from January 2025. To book a campus visit, email the team at school.liaison@tudublin.ie.

Careers Fairs

TU Dublin take part in many careers fairs and exhibitions throughout the year. Our team will be on hand to meet you at the Institute of Guidance Counsellors (IGC) conferences, Higher Options and WorldSkills Ireland events to name but a few. We are also available if you wish us to attend a careers event you are hosting in your school or college. To make a booking for an in-school careers event, email the team at school.liaison@tudublin.ie.

Meet the Team



Lynda Young
Senior Manager Student Recruitment

~ lynda.young@tudublin.ie
~ +353 1 220 6151



Fiona Canning
School Liaison & FE Manager

~ fiona.canning@tudublin.ie
~ +353 1 220 7247



Laura Corry
School Liaison Officer

~ laura.corry@tudublin.ie
~ +353 1 220 7223



Dylan Payne
School Liaison Officer

~ dylan.payne@tudublin.ie
~ +353 1 220 7665

Inbhuanaithé 7 TrailbrazHER

Sustainability & TrailbrazHER

Sustainability

Immerse yourself in a remarkable journey where TU Dublin is passionately dedicated to nurturing your talents to make a positive impact on our World. At TU Dublin, our Strategic Intent is guided by the UN Sustainable Development Goals (UN SDGs). With SDG 4 – ‘Quality Education’ underpinning our strategic pillars of People, Planet, and Partnership, TU Dublin is committed to creating real change, innovation, and impact for society.

As part of a new approach to Student Orientation, a Sustainability and Climate Action programme is delivered to all incoming students each September. Partnering with Faculties & Schools, strategic projects, local community groups and business, the Sustainability Education Team designed the new programme to introduce students to sustainability at TU Dublin and to inspire them to take part in learning opportunities, projects, and events throughout the year.

TU Dublin’s commitment to People, Planet, and Partnership is recognised by our highest performing goal SDG 11 – ‘Sustainable Cities and Communities’, where we rank 57 for our diverse work in this field. All five TU Dublin campus locations are within a 10 km radius of each other, serving Dublin’s major urban and suburban areas. Spread out over a rich environment of a collective 185 acres, the Blanchardstown, Grangegorman and Tallaght campuses are home to multiple users including students, staff, businesses, healthcare providers, schools, and their surrounding communities.

In 2023, TU Dublin met a Strategic Milestone with the achievement of our first Green Flag. TU Dublin was awarded Green-Campus accreditation by the An Taisce Green-Campus programme for the themes of Litter & Waste and Energy, Transport & Travel and Biodiversity. As a student, you’ll be part of a vibrant community that embraces sustainability, fights poverty, and tackles climate challenges head-on. Experience an education that empowers you to create a lasting positive impact. Together, let’s build a future where innovation and compassion intersect to transform our World for the better.

TrailbrazHER

TrailblazHER™ is a community of people, organisations and enterprises with a shared commitment to advancing gender equality. Through TrailblazHER™, we will support and advance opportunities for women at second level, third level and beyond their educational experience, in the workplace. Through this important work, TU Dublin will contribute to regional, national and global priorities related to gender equality.

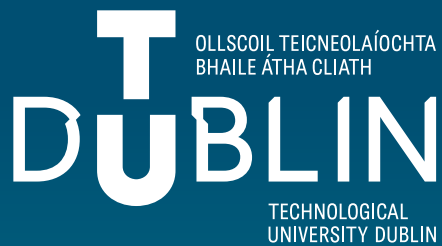
TrailblazHER™ is a free and inclusive community, open to all, that empowers female talent by providing a suite of programmes and experiences for students at TU Dublin;

- ~ **Be A TrailblazHer Programme:** Build your personalised action plan for success.
- ~ **Networking Events:** Connect with the people that can open doors for you.
- ~ **MentorHER Programme:** Be paired with an industry mentor that can help you get where you want to go.
- ~ **TrailblazHER™ Masterclasses:** Get the know-how from industry and thought leaders.
- ~ **Scholarships and Awards:** Access the supports you need for truly diverse third-level journey.
- ~ **Spotlight Role Models:** See them, meet them, be them. Link with the role modules you need to see to succeed.

Connect With Us

For further information, scan the QR code or visit tudublin.ie/TrailbrazHER.





Connect with Us

Admissions Office

~ admissions@tudublin.ie

~ 01 220 6100

Course Information

~ courses@tudublin.ie

~ 01 220 8093

DISCLAIMER

It is deemed to be accepted by all applicants that the contents of this Guide are for information purposes only and are not to be regarded as providing the basis for any contract between the university and any student, applicant or other person. The delivery of the programme elements included in this Guide, is subject to the University having the required suitably qualified academic staff, teaching and technical support, accommodation/equipment, and financial resources to run each programme element, and also to sufficient numbers of students presenting for registration and taking up allotted places on a programme element. The University reserves the right to withdraw any programme element, and/or amend fees and/or timetables at any time.